

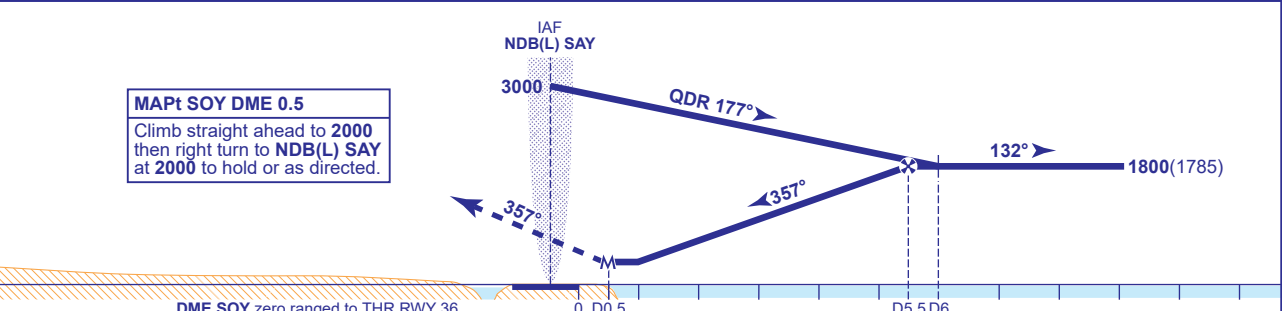
INSTRUMENT APPROACH CHART - ICAO

STORNOWAY  
LOC/DME/NDB(L)  
RWY 36  
(ACFT CAT A,B,C,D)

<div><div><div>29</div><div>20</div><div>090°</div><div>270°</div><div>37</div><div>21</div><div>080°</div></div><div>MSA 25NM NDB(L) SAY</div></div>	APP 119.480	STORNOWAY APPROACH	AD ELEVATION 26	TRANSITION ALTITUDE 3000
	TWR 119.480	STORNOWAY TOWER	THR ELEVATION 15	
	AFIS 119.480	STORNOWAY INFORMATION	OBSTACLE ELEVATION 1233 AMSL (1218) (ABOVE THR)	
	ATIS 115.100	STORNOWAY INFORMATION	BEARINGS ARE MAGNETIC	



RECOMMENDED PROFILE Gradient 5.2%, 320FT/NM					
DME SOY	5	4	3	2	1
ALT(HGT)	1640(1625)	1330(1315)	1010(995)	700(685)	380(365)



Aircraft Category		A	B	C	D	Rate of descent	G/S KT	160	140	120	100	80
OCA (OCH)	LOC/DME	330(315)	330(315)	330(315)	330(315)		FT/MIN	840	740	630	530	420
VM(C)OCA (OCH AAL)	Total Area	500(474)	630(604)	860(834)	1060(1034)							
	East of RWY 18/36	500(474)	530(504)	690(664)	770(744)							

NOTE 1 Lowest altitude to commence procedure from hold is 2000.  
2 Direct arrivals are detailed on AD 2-EGPO-8-10.

CHANGE (8/22): LOC/DME SOY CALLSIGN CORRECTED.